

# Working in a Tier 1 jurisdiction to develop a secure source for US Copper supplies & production

CSE: ACDX



America's newest copper play



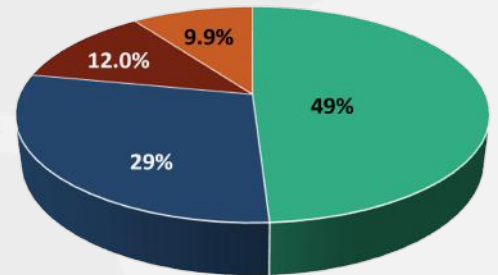
## EXPERIENCED MANAGEMENT

With extensive collective mining industry experience, our team brings geologic knowledge and capital markets expertise, including **Rick Van Nieuwenhuysse** - Chairman, **Daniel Schieber** - President & CEO, and **Andy Bowering** - Special Advisor

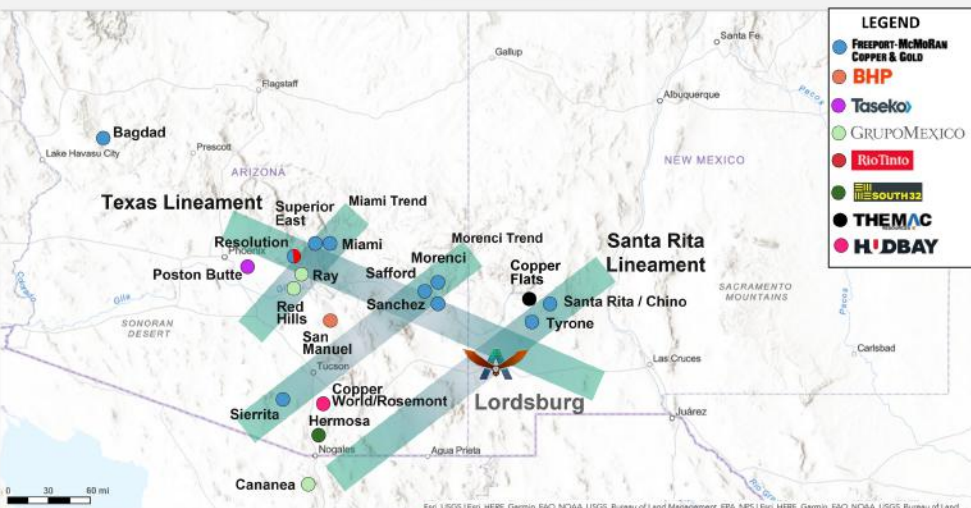
## THOUGHTFULLY STRUCTURED COMPANY

American Copper was built specifically for these projects which allows management to maintain a tight share structure.

<b>SHARES OUTSTANDING</b>	<b>82,487,431</b>
Warrants	385,000
Options	1,000,000
<b>WORKING CAPITAL</b>	<b>\$10,003,960</b>
<b>MARKET CAPITALIZATION</b>	<b>\$20,621,858</b>



■ HUBDAY    ■ NEW INVESTORS  
■ WATERTON    ■ INSIDERS & MANAGEMENT



## TIER 1 JURISDICTIONS

New Mexico and British Columbia are located in mining friendly jurisdictions and represent excellent opportunities to grow a successful copper-focused company

## PORPHYRY COUNTRY

Favorable geology at Lordsburg in Porphyry Country with geologic indicators of a porphyry system at depth.





## LORDSBURG, NEW MEXICO



Past-producing high-grade vein system with compelling porphyry exploration potential; **Historical Production of 3-4 M tons of grades 2-3% Cu, 2-3 opt Ag, and 0.11 opt Au**



Located less than 5km from Lordsburg, New Mexico with year-round road access from US Interstate 10 and well-maintained gravel roads



~18,700 acre land package including 100 patent claims



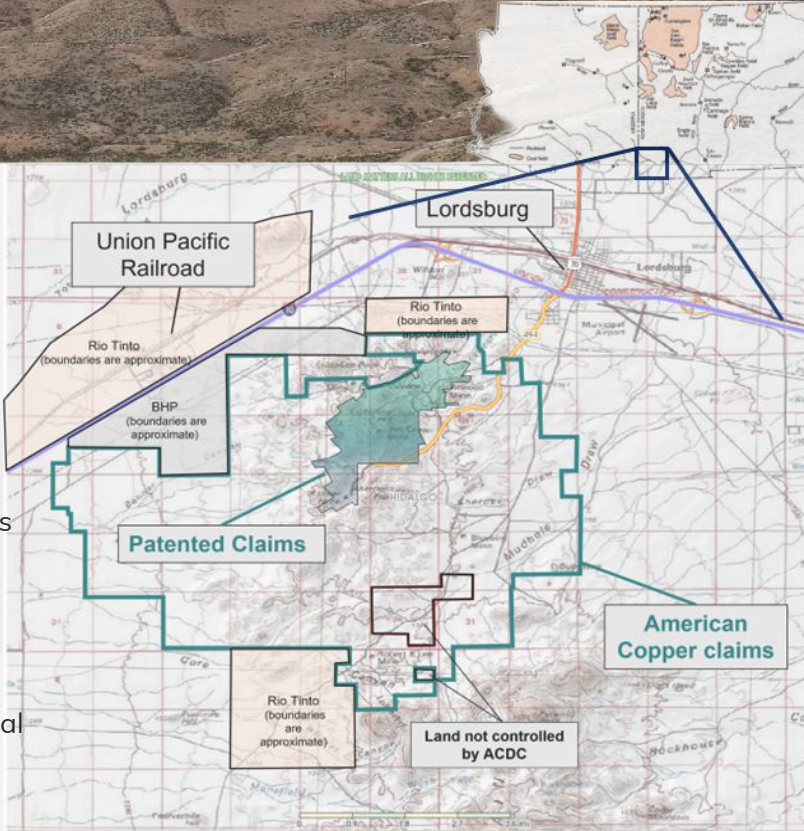
Abundant Infrastructure - next to Interstate 10, Union Pacific Railroad, and **4 power plants within 20 mi, two of which are green energy - geothermal and solar**



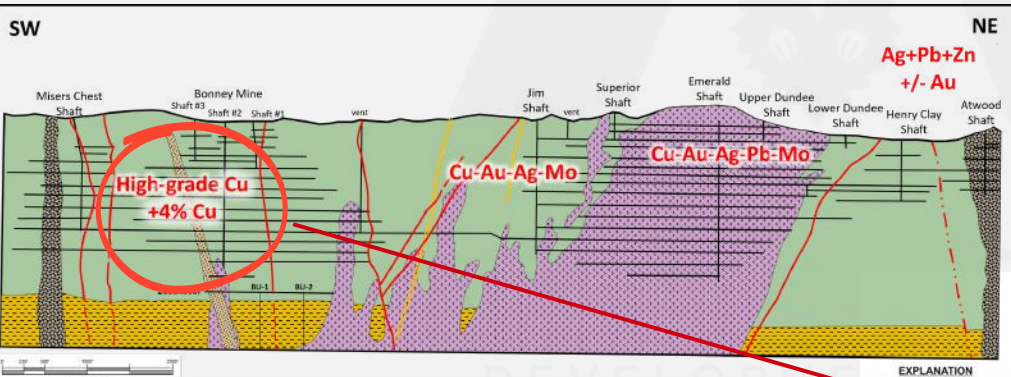
~800 soil samples and ~3500 rock samples with regional magnetic, radiometric, and gravity data compiled



117 surface holes with data available and extensive underground mapping, sampling & drilling; Significant intercepts include: **3m of 15% Cu, 1g/t Au, 8g/t Ag; 3m of 2.24% Cu, 3.5 g/t Au, 31 g/t Ag; 2m of 9% Cu, 1 g/t Au, 93 /t Ag**



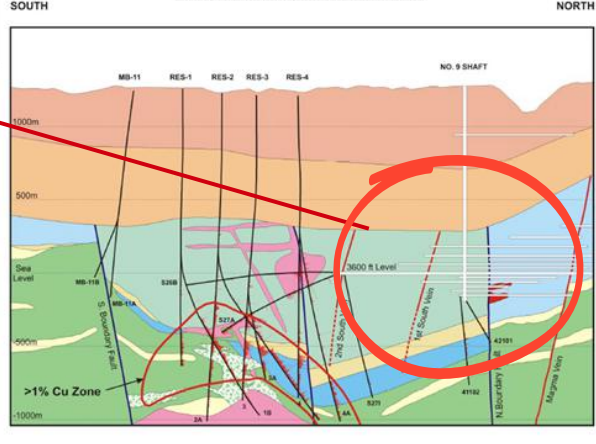
## LORDSBURG KEY TAKE-AWAYS : ANALOGOUS TO RESOLUTION



**Resolution is 1.9 billion tonnes grading 1.5% Cu<sup>1</sup>**

1. See Rio Tinto Annual Report on Production, Reserves and Operations dated 2020 and <https://www.resolutioncopper.com/about-us.htm>

**RESOLUTION CROSS SECTION THROUGH NO. 9 SHAFT  
LOOKING APPROXIMATELY WEST**



- ✓ Veins at the Lordsburg Bonney Leap and Misers Chest mines are very similar to the high-grade copper veins at Resolution
- ✓ Preservation of Cretaceous sediments at Lordsburg is similar to the Mesozoic basin at Resolution
- ✓ Potential for skarn development at Lordsburg
- ✓ Lordsburg has large magnetic highs over and adjacent to Bonney and Misers Chest - similar to magnetic and magnetotelluric highs over Resolution

