

Working in a Tier 1 jurisdiction to develop a secure source for US Copper supplies & production

CSE: ACDX



America's newest copper play



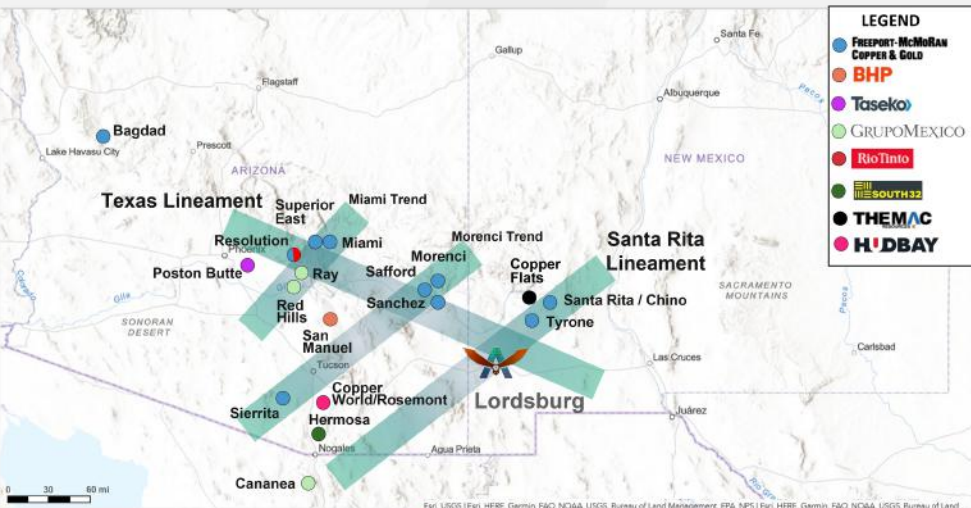
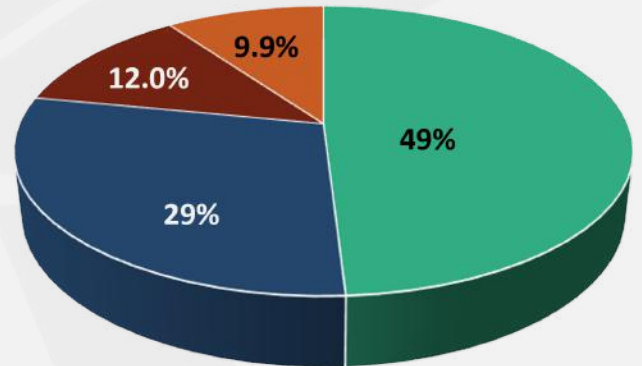
EXPERIENCED MANAGEMENT

With over 50 years of collective mining industry experience, our team brings extensive geologic knowledge and capital markets experience

THOUGHTFULLY STRUCTURED COMPANY

American Copper was built specifically for these projects which allows management to maintain a tight share structure.

- HUBBAY
- NEW INVESTORS
- WATERTON
- INSIDERS & MANAGEMENT



LOCATION, LOCATION, LOCATION

New Mexico and British Columbia are located in mining friendly jurisdictions and represent excellent opportunities to grow a successful copper-focused company

PORPHYRY COUNTRY

Favorable geology at Lordsburg in Porphyry Country with geologic indicators of a porphyry system at depth.



LORDSBURG, NEW MEXICO

Past-producing high-grade vein system with compelling porphyry exploration potential; **Historical Production of 3-4 M tons of grades 2-3% Cu, 2-3 opt Ag, and 0.11 opt Au**

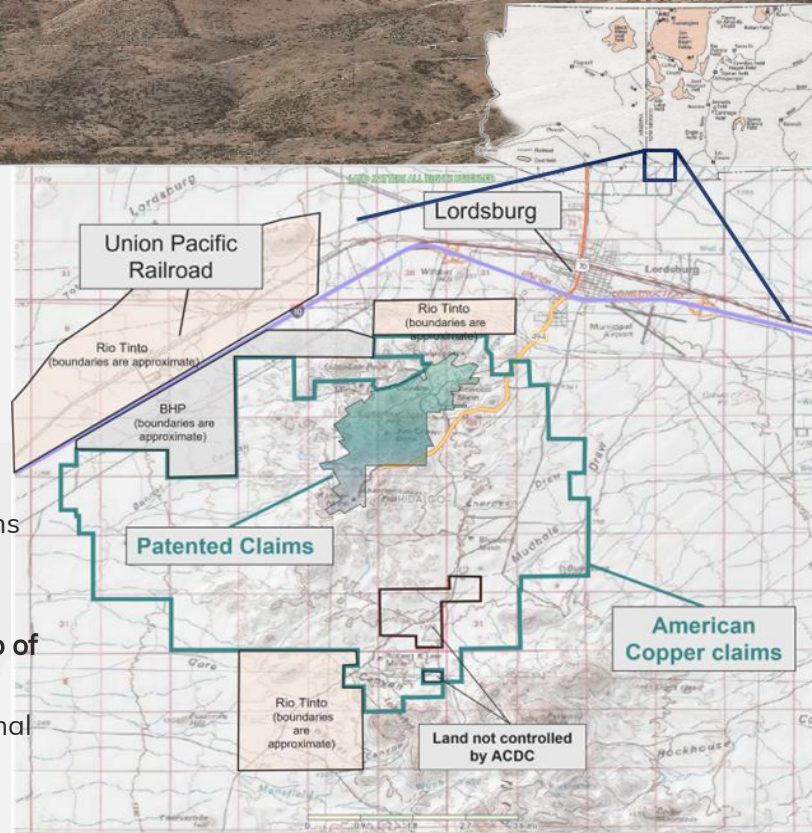
Located less than 5km from Lordsburg, New Mexico with year-round road access from US Interstate 10 and well-maintained gravel roads

~18,700 acre land package including 100 patent claims

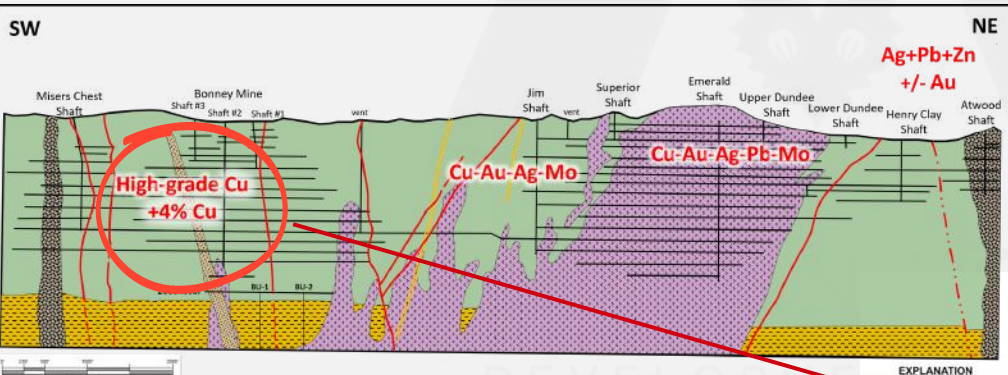
Abundant Infrastructure - next to Interstate 10, Union Pacific Railroad, and 4 power plants within 20 mi, two of which are green energy - geothermal and solar

~800 soil samples and ~3500 rock samples with regional magnetic, radiometric, and gravity data compiled

117 surface holes with data available and extensive underground mapping, sampling & drilling; Significant intercepts include: **3m of 15% Cu, 1g/t Au, 8g/t Ag; 3m of 2.24% Cu, 3.5 g/t Au, 31 g/t Ag; 2m of 9% Cu, 1 g/t Au, 93 /t Ag**

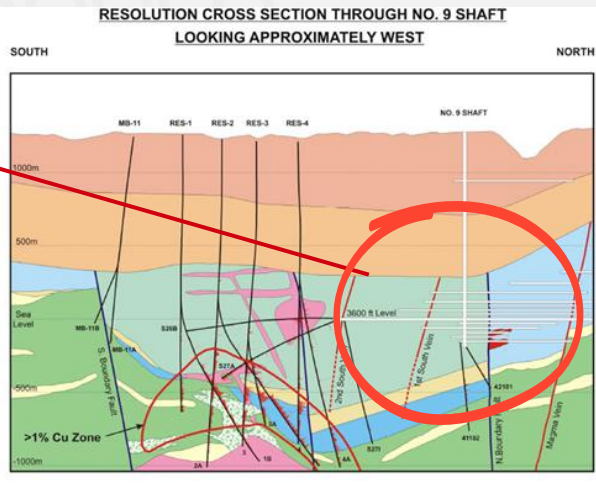


LORDSBURG KEY TAKE-AWAYS : ANALOGOUS TO RESOLUTION



Resolution is 1.9 billion tonnes grading 1.5% Cu¹

1. See Rio Tinto Annual Report on Production, Reserves and Operations dated 2020 and <https://www.resolutioncopper.com/about-us.html>



✓ Veins at the Lordsburg Bonney Leap and Misers Chest mines are very similar to the high-grade copper veins at Resolution

✓ Preservation of Cretaceous sediments at Lordsburg is similar to the Mesozoic basin at Resolution

✓ Potential for skarn development at Lordsburg

✓ Lordsburg has large magnetic highs over and adjacent to Bonney and Misers Chest - similar to magnetic and magnetotelluric highs over Resolution